



E.P.S. ENTERPRISES

MANUFACTURER • DISTRIBUTOR • WHOLESALER

Self Contained Breathing Apparatus “Golden Eagle” Brand



Model: HL- BA1M6.8L

Material: Carbon Fiber +Pure Silicone + Rubber + Fire Resistant Fabric

Net Weight: 10.5 kg / set

Using Time: 60mins – 65mins

These series (RHZK) SCBA products can be widely used in fire fighting, diving , petroleum, chemical, metallurgy, electric power, shipbuilding, military, police and other industries. It's an breathing apparatus for people who works in the environments with oxygen deficiency, toxic gas, thick smokes, etc. While use, the pressure within the respirator mask is always slightly higher than the external pressure, which can effectively prevent toxic or harmful gases penetrated the mask.



E.P.S. ENTERPRISES

MANUFACTURER • DISTRIBUTOR • WHOLESALER

I. Full Face Mask

1. Silicone Mask, with speech transmission diaphragm & an exhale valve.
2. PC Anti-fog visor, visual field up to 98%.
3. Nose cup equipped inner for effectively reducing the dead space.
4. Mask is provided with quick snug & Five adjustable head harness.

II. Demand Valve

1. To output the air depends on the human need.
2. Air flow not less than 500L/min
3. Full angle insert, fast and flexible

III. Regulator

1. Output pressure from 90psi to 135 psi (6bar to 9bar), Air flow $\geq 1000\text{L/min}$
2. Safety valve will automatically operate while the valve fails. Safety valve can keep the output pressure from 148psi to 225psi (9.9bar to 15bar)
3. There is a limited flow hole in valve connections, once the pressure gauge or pipe damage, the loss air flow no more than 25L/min

IV. Carbon Fiber Cylinder & Cylinder Valve

Cylinder fitted with valve as per is specification. Hight ensile carbon fiber cylinders, seamless for storing compressed Air. The valve is the one anti-error hand wheel, which meets the European standard. The Valve with pressure gauge on it is also available.

V. BACK PLATE & Harness

1. Back plate designed per ergonomic, lightweight and flexible. It's easily operate with one hand.
2. Harness connect shoulder strap and belt , can fix the height of the SCBA.
3. Adjusting the belt can distributed pressure on the shoulders.
4. Adjusting cylinder strap will firmly fixed on the cylinder on the back.

VI. Alarm whistle and the gauge

Fluorescence pressure gauge indicate the air pressure although in dark. It has a rubber shock ring, can avoid the shock impact on the pressure gauge. The range is 0-400bar. Alarm will be ring while the pressure at 825 75psi (55 5bar), Alarm sounds $\geq 90\text{db}$. It remind the user to retreat.

VII. Parameter:

Volume	6.8L	Alarm pressure	5.5	0,5Mpa
Operating pressure	30Mpa	Alarm sounds	$\geq 90\text{db}$	
Inhale resistance	$\leq 500\text{pa}$	Duration time	60min	
Exhalation resistance	$\leq 1000\text{pa}$	Using temperature	-30°C — 60°C	

VII. Remarks:

3L, 9L carbon fiber cylinder can be optional , and we can make it with double cylinders & double masks style .



E.P.S. ENTERPRISES

MANUFACTURER • DISTRIBUTOR • WHOLESALER



THE FIRE CONTROL CLEAN EXTINGUISHING AGENT

FIRE CONTROL HFC-236 fa extinguisher are manufactured of durable high quality materials and economically priced that's why EPS ENTERPRISES offers 6 - year warranty against mechanical defect as long as official seal remains untampered.

FIRE CONTROL HFC-236 fa SPECIFICATION

CAPACITY	5	10	15	20
HEIGHT	14	17 3/4	20	21 1/4 N
DIAMETER	4 3/8	5 1/4	6	6 IN
PRESSURE	125	200	200	200
RANGE	12 - 15			
DISCHARGE TIME (approx.)	8	10	12	20
BPS APPROVED	✓			

FIRE CONTROL HFC-236 fa

Physical Properties

Colorless, non- corroding, non-conducting, compress liquid without destruction to the atmosphere.

Chemical Description	CF ₃ CH ₂ CF ₃ HEXAFLUOROPROPANE
Molecular weight	152
B.P., °C	-1.4
F.P., °C	-93.6
Critical pressure, bar	31.008
Critical temperature, °C	124.9
Critical volume, cc/mol	268.5
20 °C Vapor pressure, bar	2.296
200 °C Liquid density, kg/m ³	1376
20 °C Saturated steam density, kg/m ³	15.58

QUALITY STANDARD

Purity, % m/m	>99.50	≥ 99.50
Acidity, % m/m	<3 x10	≤ 3x10 ⁻⁴ (3ppm)
Moisture, % m/m		≤ 1x10 ⁻³ (10ppm)
Residue, % m/m		≤ 0.01
Suspended matter/precipitate		non visualized

SAFETY DATA

ODP : 0
GWP : 6300



E.P.S. ENTERPRISES

MANUFACTURER • DISTRIBUTOR • WHOLESALER

Photoelectric Smoke Detector



Common Base Compatible

Operation Theory

The infrared light beam from Transmitter intersect the smoke particles will cause the light spread to all directions. When receiver has sensed the light, it will send signal to control panel for fire alarm status as soon as the density of smoke reaches pre-determined alarm level.

Construction and Characteristics

- Electronic circuit are mainly use ONECHIP HIBRID IC and SMT technology, low profile design, low power consumption, high precision and stability.
- Transmitter projects beam signal every 3 seconds to check any smoke caused by real fire. When smoke density reaches the preset standard, receiver will confirm the signal for 16 consecutive times. Control panel will then receive the fire signal after confirmation is made.
- Detector has a monitoring LED operates about every 16 seconds (flash) during standby status. When there is smoke, detector will issue fire signal after 16 consecutive times of confirmation on every 0.3 second. If any dust cause flashing or inconsecutive signal, it will back to normal status after 32 confirmations.
- Insect guard has a radius 0.5mm it can prevent the invasion by insects, decrease fault alarm. Besides, it also has great discharge effect on electrostatics.
- Smoke gate has a special design to obscure the strong light effectively and lead smoke comes in easily. Steam will not stay on the insect guard screen to cause the false alarm.

Specification

Model	AHS-871		
Type	2-wire	3-wire	4-wire
Alarm Contact	N/A	N/A	0.8A @ 30VDC 0.4A @ 125VAC
Voltage Range	12 ~ 30VDC		
Alarm Current	Max. 30mA		
Surge Current	2A/100ms		
Standby Current	20 ~ 30µA (Loop response under 75µA)		
Permissible Current	185mA		
Sensitivity Setting	1.50 ~ 2.80%ft		
Ambient Temperature	0°C ~ +37.8°C		
Material	Fire-proof plastic		
Dimensions	102mm (Dia.) x 50mm (H)		
Weight	About 170g		
Color	White		

Effective Alert Area

Building Height	Under 4 M	4 ~ 20 M
Area Covered	150 M ²	75 M ²



E.P.S. ENTERPRISES

MANUFACTURER • DISTRIBUTOR • WHOLESALER

CE

Manual Call Point



Features

- Available for flush or surface mounting.
- Plastic film on glass.
- Test key inserted from bottom.
- Open circuit with series resistor.
- Suitable for the majority of conventional fire alarm system.

Specification

Model	AH-0217
Max. Voltage	50VDC
Min. Voltage	2V
Max. Current	1A
Resistance	0.15 Ohms
Power Rating	1W
Temperature	-40°C ~ +85°C

CE

Fire Alarm Bell 6"



Features

- High efficiency low current consumption on 24VDC motorised bells.
- Terminals will accept 2.5mm cables.
- Simple installation via multi-fixing base plate for all types of location.
- Fitted with two series diodes for fault monitoring.
- Fully suppressed and no interference with other equipment.
- Option of customised discs printed with company name and logo.

Specification

Model	AH-0218
Dimensions	6" (152mm)
Voltage	24VDC
Current	25mA
Sound Output	93dBA@1M
Movement	Motor, Pinion and Striker
Movement Features	DC motor, acetal gear wheel, steel striker
Gong	Steel, secured with phillips screw
Base Plate	Molded black polycarbonate
Weight	0.85kg



E.P.S. ENTERPRISES

MANUFACTURER • DISTRIBUTOR • WHOLESALER

Fire Alarm P. B. L. Combination Series

Products listed below are designed to in accordance with fire alarm control panel for warning purpose.

Manual Call Point (Indoor Reusable)

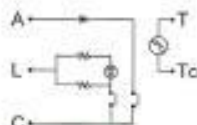
- Emergency press alarm, immediately output fire alarm signal.
- Indicator above fire alarm push-button is to confirm the alarm signal transfer.
- There are phone jack and reset button behind the cover cap.
- Type I is simultaneous dual loop, Type II is simultaneous dual signal transfer (refer to diagram below)



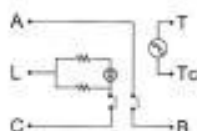
Model	AH-9717
Operating Power	24VDC 30mA
Operating Contact	Max. 30VDC 500mA
Sub-function	Phone jack, confirmation lamp, reset button
Material	Fire-proof plastic
Weight	About 160g
Dimensions	140 mm (Dia.) x 45 mm (H)

Optional Base is Available

Type I



Type II



220VAC 0.4A
24VDC 0.8A

Fire Alarm Bell 4"

- Motor energized, low power consumption (28mA), long operating life.
- Bell shell is made of steel plate, so it will sound loud and clear.



Model	AH-9718
Consumption Current	24VDC 28mA
Energize Type	Motor
Sound	Minimum 85dB / M and above
Material	Bell shell : steel plate Bell base : 1.2mm steel plate
Weight	About 450g
Dimensions	100mm (Dia.) x 50mm (H)

Fire Indicating Lamp

- Uses white bulb (or low current LED) and installed inside the red lamp cover.
- Its luminance is clear visible within 10 meters.



Model	AH-9719
Consumption Current	24VDC 60mA / LED 20mA
Bulb	30V / 2W white bulb or LED
Lamp Cover	Glass or fire-proof plastic
Lamp Base	Fire-proof plastic
Weight	Glass : about 160g Fire-proof plastic : about 70g
Dimensions	90mm (Dia.) x 70mm (H)



E.P.S. ENTERPRISES

MANUFACTURER • DISTRIBUTOR • WHOLESALER

Fire Alarm Control Panel

CE

NEW



1 Zone – 8 Zone

This conventional panel provides a cost-effective solution to fire detection in most medium size installations. The unit has been designed to offer high standards of performance, reliability and quality to comply with EN-54, part 2 & 4.

Standard Features

- Fully supervisory to all inputs and outputs.
- Indication for open, short circuit and lead removal on detection loop.
- Resettable fuses that can automatically cut off power for circuit protection.
- Twin sounder circuit outputs and each rated at 1A @24 VDC.
- Built-in output per zone for Repeater panels.
- Auto-monitoring for open and short circuit on batteries.
- Zones disable facility enabling simple servicing and maintenance.
- On-board key switch enable for board operation.
- Complete with integral charger for sealed lead acid batteries.
- Ground leakage monitoring.
- Disconnecting supervisory between PCBs.
- Main sound and area sound disable function.
- Lamp test feature.

Optional Features

- Outputs for extinguishing facility and activated when alarm from 2 cross-zones. (AH-02412E)
- Upto 32-zone is also available with larger dimensions.
- LCD display (2 x 20) with program keypad (AH-02412L).

Specification

Model	AH-02412
Supply Voltage	220 VAC / 50Hz
Standby Voltage	24 VDC
Battery Capacity	2 x 12V / 12AH
Max. Output Current	2A @24 VDC
Max. No. of Detectors per zone	30
Max. No. of Bells @25mA	40 per sounder circuit
Housing Material	1.2mm steel plate
Dimensions	340mm (H) x 340mm (W) x 130mm (D)
Weight (without batteries)	7kg

Dimensions 90mm (Dia.) x 70mm (H)



E.P.S. ENTERPRISES

MANUFACTURER • DISTRIBUTOR • WHOLESALER

CE

Manual Pull Station



Features

- Emergency START / STOP switch, AUTO / MANUAL key switch.
- POWER LED, RELEASING LED, START LED, STOP LED, AUTO LED and MANUAL LED.
- Digital Release Countdown.

Specification

Model	AH-03232
Supply Voltage	24 VDC
Material	1.2mm stainless steel
Color	Red
Dimensions	160mm (H) x 165mm (W) x 50mm (D)

CE

Releasing Indicator



Model	AH-03233B
Supply Voltage	24 VDC 200mA
Light Source	1W bulb x 18
Display Type	Flash / Non-flash
Material	0.8mm stainless steel
Color	Red
Dimensions	150mm (H) x 400mm (W) x 80mm (D)



E.P.S. ENTERPRISES

MANUFACTURER • DISTRIBUTOR • WHOLESALER

Fire Alarm Control Panel



1 Zone - 10 Zone

Features

- This unit has Accumulation function, it can minimize the false alarm that caused by unstable pulse or any abnormal signal (false alarm) and no effect on the function of fire alarm at all.
- Each loop uses two different LED to indicate Fire alarm and Disconnection.
- Loop test switch uses single-loop press type to improve the twisting switch that its contact failure will caused by dust and improper use.
- Logical switch is different from traditional switch that needs to switch over higher voltage directly, it can prevent the damage caused by unstable voltage.
- External indicator power-save device can select Light ON or OFF under normal condition during power-off status, and stay blinking during alarm status which extend the operation life of control panel. (Prevent the control panel loss its function by wear-off on battery under power-off period)
- Easy to switch from fire alarm to smoke evacuation, sprinkling or foam system.
- Movable loop indication labels, they can be easily changed without affect its magnificent appearance.
- Annunciator is available on model (AH-02124).

Specification

Model	AH-00212	Remark
Power	110 / 220VAC 50/60Hz	Others also available
Voltage Scope	Nominal voltage $\pm 20\%$	
Standby Power	24VDC 800mA~2100mA	
Charging Voltage, Current	28VDC 100~400mA	With auto adjustment function
Loop Voltage, Current	24VDC short circuit under 5V 30mA	
Exterior Resistance	Round-trip under 50 Ω	
# of heat detector connected	No limit	Except electronic-type
# of smoke detector connected	30/loop	Horing Lih manufactured
# of indicating lamp, bell connected	# of loop x 1.2	
Digital Switch	500000 Cycles Min. reliability	
End of Line Resistor	10k Ω	One per loop
Material	1.2mm steel plate	
Color	Ivory white	Others also available
Dimensions	350mm (H) x 285mm (W) x 105mm (D)	
Accessory Functions	Dual signal transfer contacts, aux. contacts	



E.P.S. ENTERPRISES

MANUFACTURER • DISTRIBUTOR • WHOLESALER



AUTOMATIC SPRINKLERS GL SERIES UPRIGHT • PENDENT VERTICAL SIDEWALL HORIZONTAL SIDEWALL CONVENTIONAL (OLD STYLE)

DESCRIPTION AND OPERATION

The Globe GL Series Sprinkler is a low profile yet durable design which utilizes a frangible glass ampule as the thermosensitive element. While the sprinkler provides an aesthetically pleasing appearance, it can be installed wherever standard spray sprinklers are specified. This sprinkler series is available in various styles, orifices, temperature ratings and finishes to meet varying design requirements.

The heart of Globe's GL Series sprinkler proven actuating assembly is a hermetically sealed frangible glass ampule that contains a precisely measured amount of fluid. When heat is absorbed, the liquid within the bulb expands increasing the internal pressure. At the prescribed temperature the internal pressure within the ampule exceeds the strength of the glass causing the glass to shatter. This results in water discharge which is distributed in an approved pattern depending upon the deflector style used.



UPRIGHT



CONVENTIONAL



PENDENT



VERTICAL SIDEWALL

TECHNICAL DATA

- See reverse side for Approvals and Specifications.
- Temperature Ratings - 135°F (57°C), 155°F (68°C), 175°F (79°C), 200°F (93°C), 286°F (141°C), 360°F (182°C).
- Water Working Pressure Rating - 175 psi (12 Bars).
- Factory tested hydrostatically to 500 psi (34 Bars).
- Maximum low temperature glass bulb rating is -67°F (-55°C).
- Frame - bronze • Deflector - brass • Screw - brass
- Bulb seat - copper • Spring - nickel alloy • Seal - teflon
- Bulb - glass with glycerin solution, 5mm size.



HORIZONTAL SIDEWALL

• SPRINKLER TEMPERATURE RATING/CLASSIFICATION and COLOR CODING

CLASSIFICATION	AVAILABLE SPRINKLER TEMPERATURES	BULB COLOR	N.F.P.A. MAXIMUM CEILING TEMPERATURE
ORDINARY	135°F/55°C 175°F/79°C	ORANGEREAD	100°F 38°C
INTERMEDIATE	175°F/80°C 200°F/93°C	YELLOWGREEN	150°F 66°C
HIGH	286°F 141°C	BLUE	225°F 107°C
EXTRA-HIGH	360°F 182°C	MAUVE	300°F 149°C



E.P.S. ENTERPRISES

MANUFACTURER • DISTRIBUTOR • WHOLESALER

AUTOMATIC SPRINKLERS GL SERIES UPRIGHT • PENDENT • VERTICAL SIDEWALL HORIZONTAL SIDEWALL • CONVENTIONAL (OLD STYLE)

SPECIFICATIONS

NOMINAL "K" FACTOR	THREAD SIZE	*LENGTH	FINISHES
2.8 (39 mark)	1/2" NPT	2 1/4" (5.7 cm)	Factory Bronze **Satin Chrome Bright Chrome
4.2 (59 mark)	1/2" NPT	2 1/4" (5.7 cm)	White Polyester+ Black Polyester+
5.6 (80 mark)	1/2" NPT	2 1/4" (5.7 cm)	Wax Coated **Lead Coated
7.8 (111 mark)	1/2" NPT	2 1/4" (5.7 cm)	**Wax over Lead
8.1 (116 mark)	3/4" NPT	2 7/16" (6.2 cm)	

NOTE: METRIC CONVERSIONS ARE APPROXIMATE.

* HORIZONTAL SIDEWALL IS 2 SHG.
** FINISHES AVAILABLE ON SPECIAL ORDER.
*** WAX COATING UL LISTED UP TO 200°F ONLY.
+ AVAILABLE AS UL AND C-UL LISTED CORROSION RESISTANT WHEN SPECIFIED ON ORDER.

APPROVALS

STYLE	SIN MODEL	ORIFICE SIZE	135°F 57°C	155°F 68°C	175°F 79°C	200°F 93°C	286°F 141°C	360°F 182°C	eULus	FM	NYC - DOB MEA 101-92-E
UPRIGHT	GL2861	2.8	X	X	X	X	X	X	X	—	X
	GL4261	4.2	X	X	X	X	X	X	X	—	X
	GL5661	5.6	X	X	X	X	X	X	X	X	X
	GL8161	7.8 [†]	X	X	X	X	X	X	X	X	X
	GL8164	8.1	X	X	X	X	X	X	X	X	X
PENDENT	GL2851	2.8	X	X	X	X	X	X	X	—	X
	GL4251	4.2	X	X	X	X	X	X	X	—	X
	GL5651	5.6	X	X	X	X	X	X	X	X	X
	GL8151	7.8 [†]	X	X	X	X	X	X	X	X	X
	GL8154	8.1	X	X	X	X	X	X	X	X	X
VERTICAL SIDEWALL	GL5675	5.6	X	X	X	X	X	X	X	X	—
	GL8176	8.1	X	X	X	X	X	X	X	—	—
HORIZONTAL SIDEWALL §	GL2870	2.8	X	X	X	X	X	X	X	—	X
	GL4270	4.2	X	X	X	X	X	X	X	—	X
	GL5670	5.6	X	X	X	X	X	X	X	X	X
	GL8171	8.1	X	X	X	X	X	X	X	—	—
CONVENTIONAL (OLD STYLE)	GL5668	5.6	X	X	X	X	X	X	—	—	—
	GL8169	8.1	X	X	X	X	X	X	—	—	—

† HORIZONTAL SIDEWALL UL LISTED FOR DEFLECTOR 4" TO 12" BELOW THE CEILING, FM APPROVED 4" TO 6".
‡ VERTICAL SIDEWALL UL LISTED FOR LIGHT HAZARD ONLY.
§ PENDENT VERTICAL SIDEWALL UL LISTED FOR 6 MIN. SPACING.
|| UPRIGHT VERTICAL SIDEWALL UL LISTED FOR 6 MIN. SPACING.
¶ 1/2" NPT.

ORDERING INFORMATION

SPECIFY

- Quantity • Model Number • Style
- Orifice • Thread Sizes • Temperature
- Finishes desired
- Quantity - Wrenches - PIN 325390 (1/2"); PIN 312366 (L.O.)



GLOBE® PRODUCT WARRANTY

Globe agrees to repair or replace any of its own manufactured products found to be defective in material or workmanship for a period of one year from date of shipment.

For specific details of our warranty please refer to Price List Terms and Conditions of Sale (Our Price List).

4077 AIRPARK DRIVE, STANDISH, MICHIGAN 48658
989-846-4583 FAX 989-846-9231
1-800-248-0278 www.globesprinkler.com